



Kempinski Hotel
Corvinus

BUDAPEST



PREMIUM COLLECTION

– the finest selection of rooms & suites –

Kempinski
HOTELIERS SINCE 1897

PREMIUM COLLECTION

Rooms & Suites at Kempinski Hotel Corvinus Budapest

Kempinski Hotel Corvinus Budapest's rooms remodelling has created sleek, refreshed and reconstructed spaces, accented with natural motifs gently complementing the iconic city views that echo the soft buzz of Budapest.

The generous expanse of our rooms is enhanced by the delicacy of the dainty field flowers pattern of the new carpets, streamlined with accessories such as satin pillows reflecting the clear blue sky and trims as gold as the sun on the blackout curtains.



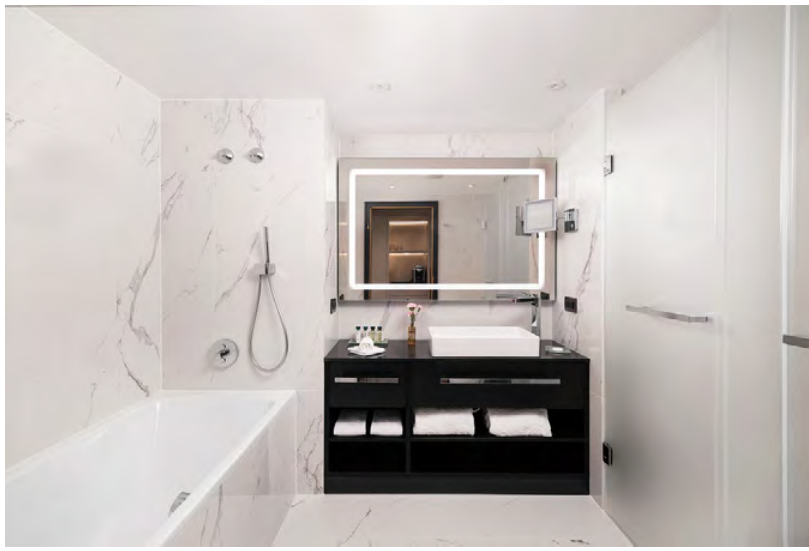
Deluxe Rooms

Stylish as well as functional, our Deluxe Rooms are ideal for unwinding after a day in downtown Budapest. They are completely redesigned and furnished with locally made, custom, sustainable modern furniture. Each room features a bathroom with either a shower or a bathtub. Overlooking the streets adjacent to the hotel or the quiet inner courtyard, these rooms ensure a peaceful rest, making them perfect for relaxing at the end of an eventful day. The essential and unique amenities, including a Nespresso coffee machine, are designed to assist business travellers and pamper leisure travellers in Budapest.

FACTS & FIGURES (Deluxe Rooms)

no.	Inventory: 105
sq	Size: 28-30 sqm / 301-322 sqft
eye	View: Street or inner courtyard view
bed	Bed: Eastern King
beds	Extra bed: Extra bed not available
bath	Bathroom: Bath or Shower
people	Maximum occupancy: 2 Adults
door	Interconnecting: No





Deluxe Rooms Park View

These brand-new, modern Deluxe Park View rooms provide stunning views of Erzsébet Park, which remains verdant throughout the summer, and the iconic Ferris wheel. Furnished with contemporary furniture, these rooms combine luxury, joie de vivre and sustainability to offer unparalleled tranquillity. Each room features a bathroom with either a shower or a bathtub. The essential and unique amenities, including a Nespresso coffee machine, are designed to assist business travellers and pamper leisure travellers in Budapest.

FACTS & FIGURES (Deluxe Rooms Park View)

no.	Inventory: 29
sq	Size: 28-30 sqm / 301-322 sqft
eye	View: Park view
bed	Bed: Eastern King
beds	Extra bed: Extra bed not available
bath	Bathroom: Bath or Shower
people	Maximum occupancy: 2 Adults
door	Interconnecting: No



Premium Deluxe Rooms

Featuring a brand new design and concept, these spacious rooms are equipped with modern, sustainably made furniture. Overlooking the streets dotted with historic buildings or the quiet inner courtyard, these pleasantly sized, functional and inspiring rooms provide a refined ambience that captures the essence of city life in the Hungarian capital. A Nespresso coffee maker is also available in these rooms.



FACTS & FIGURES (Premium Deluxe Rooms)

no.	Inventory: 102
sq	Size: 33-35 sqm / 355-377 sqft
eye	View: Street or inner courtyard view
bed	Bed: Eastern King or Twin
extra bed	Extra bed: One extra bed possible
bath	Bathroom: Bath and separate shower
people	Maximum occupancy: 3 Adults
door	Interconnecting: Yes



Corvinus Rooms

Defined by Alex Kravetz's vision of contemporary luxury, Corvinus Rooms combine the resulting comfort and serenity with the electrifying vista spanning over Erzsébet Park and the Ferris wheel, or the historical city centre's signature edifices on Fashion Street. These rooms accommodate a luxurious king size or twin bed, and a spacious bathroom that features both a shower and a bathtub. Connecting rooms are available in this category, as an ideal option for families. Every such room has a Nespresso coffee maker.



FACTS & FIGURES (Corvinus Rooms)

no.	Inventory: 71
sq	Size: 35-40 sqm / 377-430 sqft
👁	View: Park or inner courtyard view
🛏	Bed: Eastern King or Twin
🛏	Extra bed: Extra bed not available
🚿	Bathroom: Bath, Shower
👤	Maximum occupancy: 2 Adults
🚪	Interconnecting: Yes



Junior Suites

Generously spacious in size, Junior Suites pamper the senses, enhancing your spatial experience with magnificent views of either the lush greenery of Erzsébet Park and its Ferris wheel, or the iconic heritage architecture of Fashion Street. The living room features a sofa and coffee table, while the bathroom has both a shower and a bathtub. A Nespresso coffee maker is also available in these rooms.

FACTS & FIGURES (Junior Suites)

no.	Inventory: 18
sq	Size: 45-65 sqm / 463-700 sqft
👁️	View: Park or street view
🛏️	Bed: Eastern King
🛋️	Extra bed: One extra bed possible
🚿	Bathroom: Bath, Shower
👤👤👤	Maximum occupancy: 3 Adults
🗨️	Interconnecting: Suites 732 & 832 to adjoining Corvinus Art Collection Suites - 169 sqm / 1 818 sqft and Suite 954 to Corvinus Art Collection Suite 960 - 200 sqm / 2 150 sqft




Executive Suites

Our Executive Suites translate the Kempinski joie de vivre into an exceptionally sleek and expansive space, complete with a living room, bedroom with a king size bed, and a bathroom offering both a shower and bathtub as well as twin basins. The splendid contemporary aesthetic, featuring the hotel’s own artwork, is complemented by a sprawling, stunning vista of Erzsébet Park and the Ferris wheel, while four Executive Suites also benefit from romantic bay windows.



FACTS & FIGURES (Executive Suites with separated bedroom)

no.	Inventory: 4
sq	Size: 57 sqm / 614 sqft
👁	View: Park view
🛏	Bed: Eastern King
🛋	Extra bed: Yes
🚿	Bathroom: Bath, Shower
👤👤👤	Maximum occupancy: 3 Adults
🚪	Interconnecting: No



EXECUTIVE SUITE

FACTS & FIGURES (Executive Suites - open plan suites)

no.	Inventory: 10
sq	Size 57-79 sqm / 614-851 sqft
	View: Park view
	Bed: Eastern King
	Extra bed: Yes
	Bathroom: Bath, Shower
	Maximum occupancy: 3 Adults
	Interconnecting: Yes - Corvinus Room Park View

Executive Suites





Executive Suites

A lot of natural light flows into the panoramic corner suites through the huge bay windows in the living room, and thanks to their special location within the hotel, they offer a view of two streets, Deák Ferenc and Bécsi Street. The suite consists of a spacious living room, a bedroom and two bathrooms. The elegant cognac leather-covered sofa in the living room can be transformed into a bed. If the guest also books a room adjacent to the suite, they will receive a two-bedroom family suite – separated from the rest of the guest corridor and expanded with a lockable antechamber.



FACTS & FIGURES (Executive Suites with separated bedroom)

no.	Inventory: 5
sq	Size: 64 sqm / 700 sqft
eye	View: Street view
bed	Bed: Eastern King
extra bed	Extra bed: Yes
bath	Bathroom: Bath, Shower
people	Maximum occupancy: 3 Adults
door	Interconnecting: No



Corvinus Art Collection Suite 700

Designed in a serene Japandi style, Suite No. 700 stands out with its fluid, curved features. Its new décor harmoniously blends shades of grey and terracotta, complementing natural materials such as oak and stone. The rounded contours of the circular space, framed by a bay window, seamlessly extend into the soft, curved furnishings, including an oval desk, subtle wave patterns on the individually painted walls and bespoke designs of the sofa, bed and cupboards. Completing the suite’s ambience is the impressive painting ‘Aiorganic 2’ by Hungarian artist Gábor Krüzselly.



FACTS & FIGURES (Suite 700)

no.	Inventory: 1
sq	Size: 55 sqm / 591 sqft
eye	View: Park view
bed	Bed: Eastern King
sofa	Extra bed: Yes
bath	Bathroom: Bath, Shower
people	Maximum occupancy: 3 Adults
door	Interconnecting: No



Corvinus Art Collection

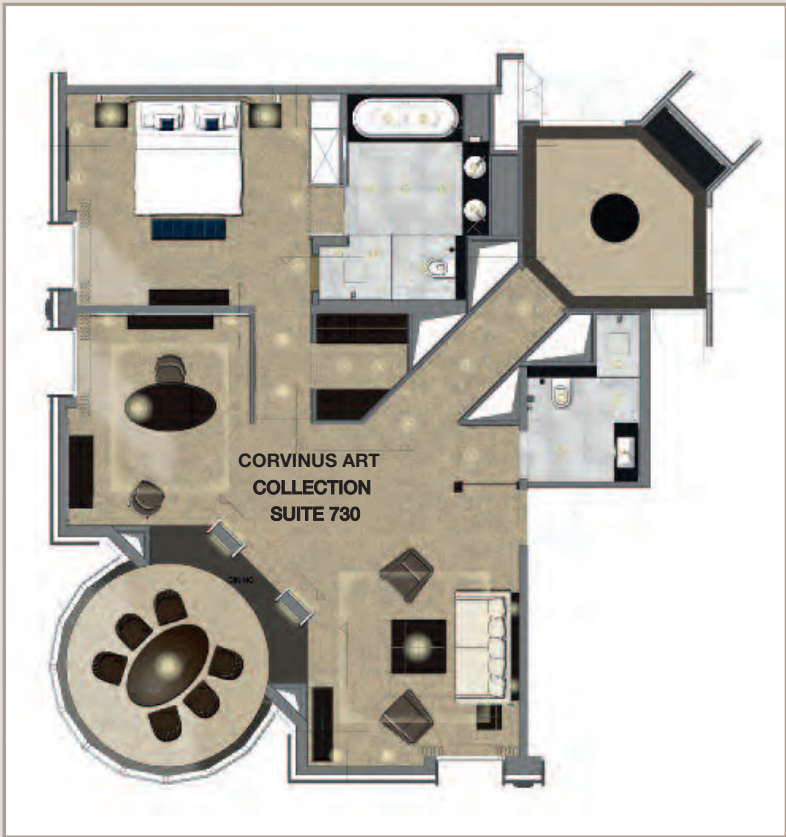
Suites 730 & 830

The ultimate in Corvinus luxury, Suite 730 and Suite 830 ensure a royal experience. We envisioned a striking design accented with elegant grey and comforting beige throughout the maximised space, outfitting the living and work rooms, the bedroom and the bathrooms with enhanced functions and charming touches. Graced with the hotel’s own artwork, these suites draw in central Budapest’s urban landscape, from its iconic heritage edifices to the Ferris wheel in Erzsébet Park.



FACTS & FIGURES (Suites 730 and 830)

no.	Inventory: 2
sq	Size: 104 sqm / 1118 sqft
eye	View: Park view
bed	Bed: Eastern King
sofa	Extra bed: Yes
bath	Bathroom: Bath, Shower
people	Maximum occupancy: 3 Adults
door	Interconnecting: Yes - to a Junior Suite - 169 sqm / 1 818 sqft





Corvinus Art Collection Suite Herend 860

A tribute to the craftsmanship and an acknowledgment of the rich heritage the city has to offer, reinterpreted in a contemporary way. Beautiful views to the Citadel and Statue of Liberty, soft beige, green and pink shades, precious paintings, Biedermeier furniture, artistic upholstery – the Herend Suite offers an original and stylish milieu. The carpeting in the spacious living room reflects the floral details of the world-famous Herend porcelain decorating the suite. The quiescent bedroom with dressing room and adjacent bathroom invites guests for a relaxing night.

FACTS & FIGURES (Herend Suite 860)

no.	Inventory: 1
sq	Size: 124 sqm / 1 333 sqft
👁	View: Street view
🛏	Bed: Eastern King
🛏	Extra bed: Yes
🚿	Bathroom: Bath, Shower
👤👤👤	Maximum occupancy: 3 Adults
🚪	Interconnecting: Yes - 153 sqm / 1 645 sqft



Corvinus Art Collection Suite 960

Harmony, serenity and elegance – the synthesis of sense and form pairs timeless design with modern-day functionality. Bright, shiny surfaces are combined with noble individual pieces in dark wenge wood with embedded brass details. Art pieces of renowned local artists adorn the walls. The suite features a cushy sitting room with plentiful wardrobe space, a working and dining area and an elegant and commodious bathroom. To top it off, guests wake up in the gorgeous bedroom in the rotunda to the unparalleled view of Gellért Hill. Enjoy endless space with your family in a three-bedroom Infinity Suite by connecting with a Corvinus Room and a Junior Suite.

FACTS & FIGURES (Deák Suite 960)

no.

Inventory: 1

sq

Size: 117 sqm / 1 260 sqft

eye

View: Street view

bed

Bed: Eastern King

beds

Extra bed: Yes

bath

Bathroom: Bath, Shower

people

Maximum occupancy: 6 Adults (booked with 3 bedrooms)

door

Interconnecting: Yes - Corvinus Room / Junior Suite, with 3 bedrooms: 200 sqm / 2 153 sqft





Presidential Suite Corvinus 930

Located on the top floor, the Presidential Suite Corvinus offers a stunning view of Budapest sprawling majestically outside the windows, framing Elisabeth Park with the Ferris wheel and St Stephen’s Basilica. The two-bedroom suite provides ample space for entertaining, featuring a spacious living room, a generous working area and an elegant and functional dining room fully serviced by a preparation kitchenette. The master bedroom sets the stage for a relaxing stay, enhanced by a stunningly exclusive bathroom. Modern statues and colourful paintings from the Corvinus Art Collection set off the muted shades of the interior design.

FACTS & FIGURES (Presidential Suite Corvinus 930)

no.	Inventory: 1
sq	Size: 200 sqm / 2 153 sqft with two bedrooms
eye	View: Park view
bed	Bed: Eastern King
sofa	Extra bed: Yes
bath	Bathroom: Bath, Shower
people	Maximum occupancy: 4 Adults
door	Interconnecting: No



Additional luxury services

LIMOUSINE TRANSFER

Safe and comfortable, our Limo Service makes transfer to and from the hotel part of a luxurious journey.

BUTLER

A comprehensive range of services remain open and available throughout the entire day and night, anticipating all eventualities when you may need bespoke personal assistance.

KEMPINSKI THE SPA

Complete with the latest technology fitness equipment and various types of saunas and steam rooms, Kempinski The Spa offers a wide range of relaxing and rejuvenating treatments, among them its signature Hungary Mud regime, harnessing the power of locally sourced mineral-rich active ingredients.

GASTRONOMIC QUARTER DOWNTOWN BUDAPEST

A diverse culinary experience, GQDB is home to a range of iconic and one-of-a-kind gastronomic outlets – Nobu, ÉS Bisztró, ÉS Deli, The Living Room, Blue Fox The Bar.

IN-ROOM DINING

Culinary options from the outlets of Gastronomic Quarter Downtown Budapest are available to order.

NOBU

The first Central European restaurant of the world-famous chain, New Japanese cuisine’s Budapest outpost serves signature Nobu as well as locally inspired dishes.

ÉS BISZTRÓ

Hungarian-Viennese imperial cooking at its best, ÉS Bisztró reimagines a precious historical heyday’s favourite (now rare) delicacies in a contemporary fashion.

BLUE FOX THE BAR

Serving classic and creative cocktails, Blue Fox The Bar is the city’s most central and inventive cocktail bar, which spills out onto a terrace in the summer.

THE KITCHEN CATERS

Catering at its finest in Budapest, carefully crafted for you. From venue to menu, the catering services of the hotel provide expertise in banquet concepts, organisation and management to fit all kinds of events and satisfy all taste buds.

Kempinski Hotel
Corvinus Budapest
Erzsébet tér 7-8
1051 Budapest
Hungary

T +36 1 429 3777
+36 1 429 3375 (Reservations)

reservations.corvinus@kempinski.com
kempinski.com/budapest

GPS Long: E 19.0523529 / 19°3'8
GPS Lat: N 47.4969111 / 47°29'49

KEMPINSKI.COM

Kempinski | DISCOVERY

KEMPINSKI THE SPA
Be and stay well

